

MODIFICATION OF EXISTING CABLING TO ACHIEVE THE 5% VOLTAGE DROP AS PER IEC STANDARDS -ANNEX F

ZONE B

Line 1:

- 1- Existing BLUE Line to be removed and replaced by 4x150mm<sup>2</sup> Al
- 2- Existing RED Line to be removed and replaced by 4x150mm<sup>2</sup> Al
- 3- Existing yellow Line (1/8 and 1/ 7) to be removed and replaced by 4x150mm<sup>2</sup> Al
- 4- Existing yellow Line (Headed 1/1) to be removed and replaced by 4x50mm<sup>2</sup> Al
- 5- Others no change or ref to cad and table of additional





Line 2:

- 1- Existing BLUE Line to be removed and replaced by 4x150mm<sup>2</sup> Al
- 2- Existing RED Line to be removed and replaced by 4x150mm<sup>2</sup> Al
- 3- Existing yellow Line (2/1 up to 2/ 6) to be removed and replaced by 4x150mm<sup>2</sup> Al
- 4- Existing yellow Line (1 up to 2/ 6) to be removed and replaced by 4x50mm<sup>2</sup> Al
- 5- Existing yellow Line (2 up to 2/ 3) to be removed and replaced by 4x50mm<sup>2</sup> Al
- 6- Others no change or ref to cad and table of additional





Line 3:

- 1- Existing Green Line to be removed and replaced by 4x150mm<sup>2</sup> Al
- 2- Existing BLUE Line to be removed and replaced by 4x150mm<sup>2</sup> Al
- 3- Existing RED Line to be removed and replaced by 4x150mm<sup>2</sup> Al
- 4- Others no change or ref to cad and table of additional





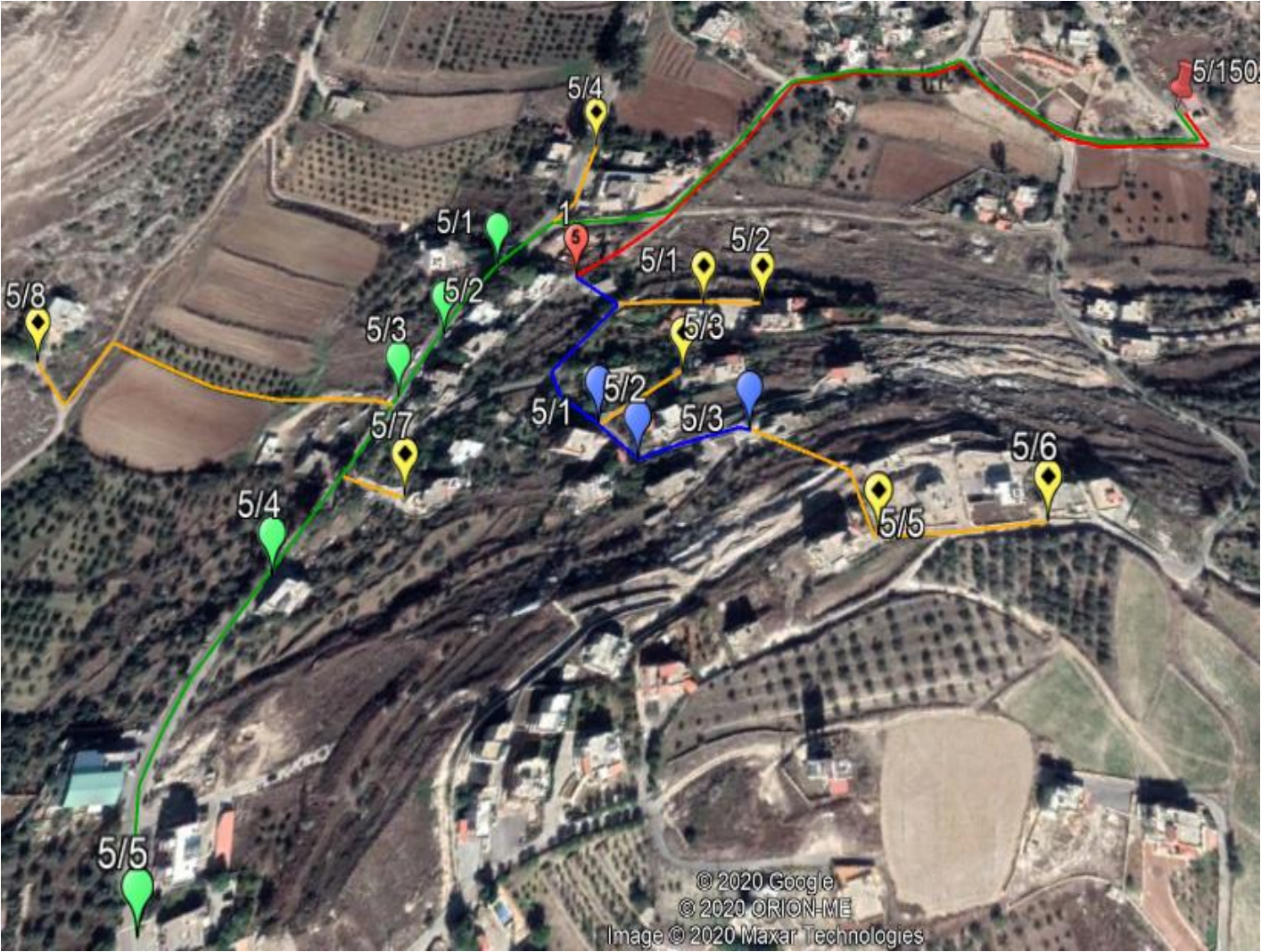
Annex F

Line 4:

- 1- Existing Green Line to be removed and replaced by 4x150mm<sup>2</sup> Al
- 2- Existing BLUE Line to be removed and replaced by 4x150mm<sup>2</sup> Al
- 3- Existing yellow Line (up to 4/ 2) to be removed and replaced by 4x150mm<sup>2</sup> Al
- 4- Existing yellow Line (up to 4/ 1) to be removed and replaced by 4x50mm<sup>2</sup> Al
- 5- Others no change or ref to cad and table of additional





<p>Line 5:</p> <ol style="list-style-type: none"> <li>1- Existing Green Line to be removed and replaced by 4x150mm<sup>2</sup> Al</li> <li>2- Existing BLUE Line to be removed and replaced by 4x150mm<sup>2</sup> Al</li> <li>3- Existing RED Line to be removed and replaced by 4x150mm<sup>2</sup> Al</li> <li>4- Existing yellow Line (up to 4/ 2) to be removed and replaced by 4x150mm<sup>2</sup> Al</li> <li>5- Existing yellow Line (up to 5/ 6) to be removed and replaced by 4x50mm<sup>2</sup> Al</li> <li>6- Existing yellow Line (up to 5/ 8) to be removed and replaced by 4x50mm<sup>2</sup> Al</li> <li>7- Others no change or ref to cad and table of additional</li> </ol>	
<p>LINE 6</p>	<p>NO EXISTING/ REF TO CAD DWG ONLY</p>

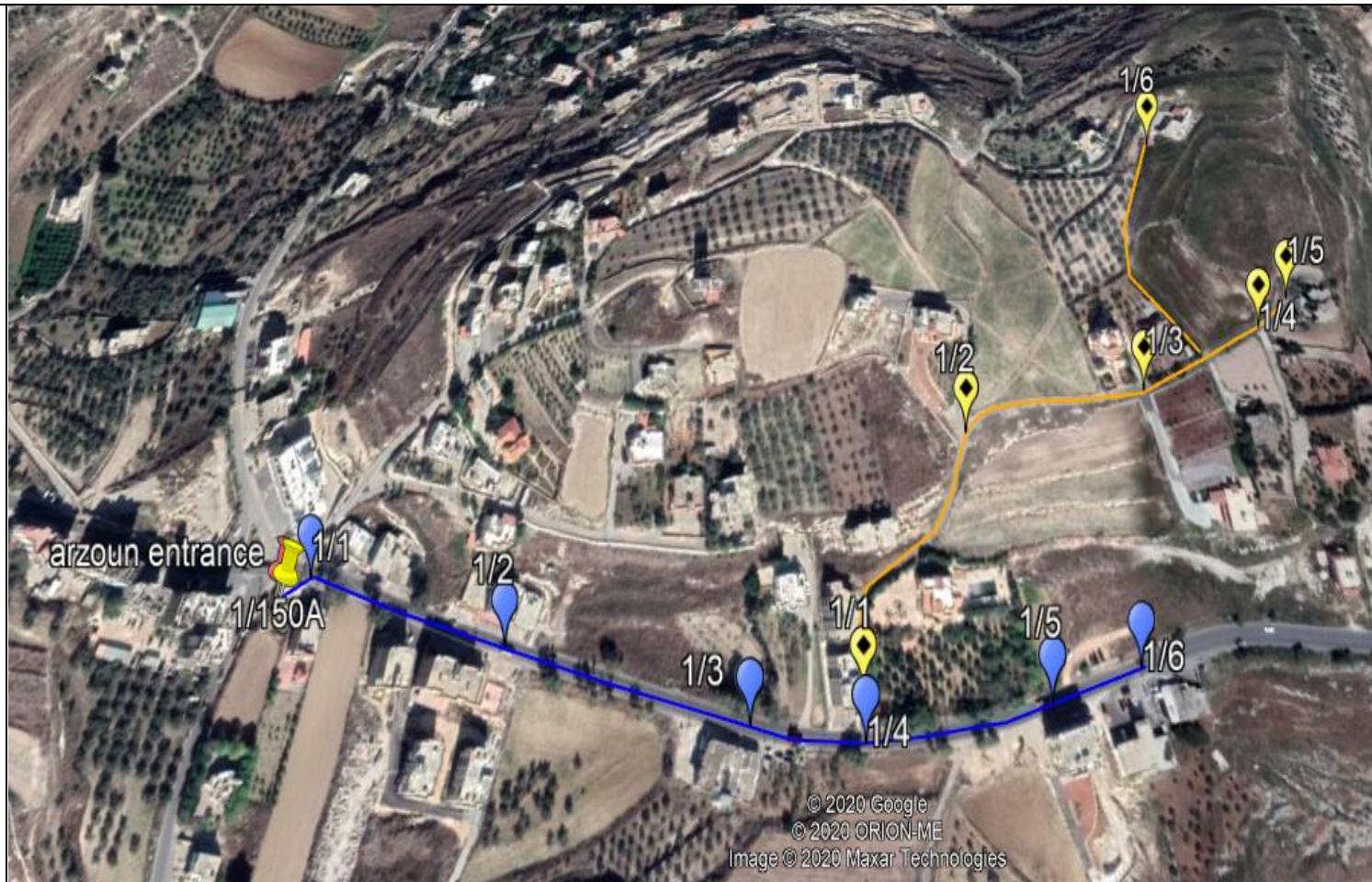


MODIFICATION OF EXISTING CABLING TO ACHIEVE THE 5% VOLTAGE DROP AS PER IEC STANDARDS

ZONE A

Line 1

- 1- Existing BLUE Line to be removed and replaced by 4x150mm<sup>2</sup> Al
- 2- Existing yellow Line (up to 1/ 5) to be removed and replaced by 4x70mm<sup>2</sup> Al
- 3- Others no change or ref to cad and table of additional





Line 2

- 1- Existing red Line to be removed and replaced by :  
1<sup>st</sup> 100m to be replaced  
4x150mm24x70mm  
2 AI , others by  
70mm2
- 2- Existing yellow Line (up to 2/ 6) to be removed and replaced by  
4x70mm2 AI
- 3- Others no change or ref to cad and table of additional



Line 3

- 1- Existing Blue Line to be removed and replaced by :
- 2- 1<sup>st</sup> 100 meters by 4x150mm<sup>2</sup> and others 4x70mm<sup>2</sup> Al
- 3- Existing yellow Line (up to 3/ 6) to be removed and replaced by 4x70mm<sup>2</sup> Al
- 4- Existing yellow Line (up to 3/ 2) to be removed and replaced by 4x35mm<sup>2</sup> Al
- 5- Others no change or ref to cad and table of additional

